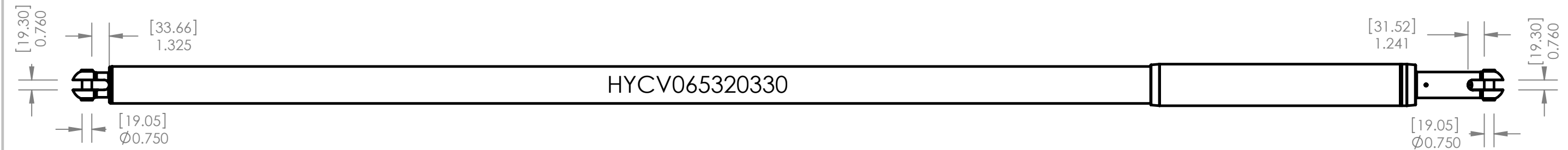
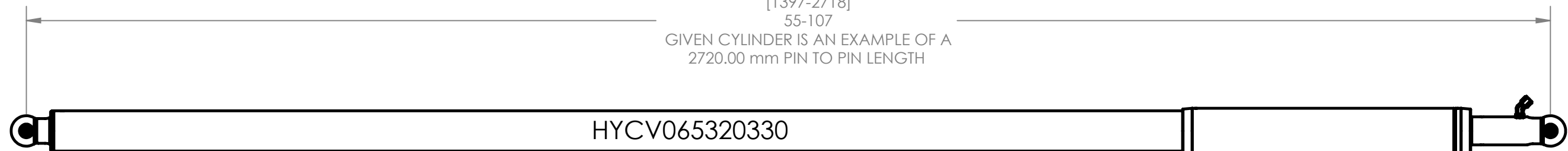
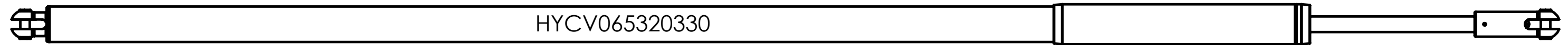


RANGE OF LENGTHS
 [1397-2718]
 55-107
 GIVEN CYLINDER IS AN EXAMPLE OF A
 2720.00 mm PIN TO PIN LENGTH



RANGE OF LENGTHS
 [1727-3048]
 68-120



HARKEN
 INCORPORATED
 1251 E. Wisconsin Avenue
 Pewaukee, Wisconsin 53072
 262-691-3320
 Fax: 262-691-3807

ALL DIMENSIONS IN INCHES		TOLERANCES (EXCEPT AS NOTED)		DRAWING NO.	
DECIMAL	±	ANGULAR	±	SINGLE-ACTING VANG HYD CYLINDER	
FRACTIONAL	±	HOLE DIAMETER	±	DRAWN BY BLB	MATERIAL VARIOUS
				CHK'D	FINISH -
					SCALE 1:8
					DATE 6/24/2011

© HARKEN YACHT EQUIPMENT DIVISION OF HARKEN, INC.
 The designs, constructions, arrangements, disclosures and devices illustrated in presentations bearing this note are the property of Harken, Incorporated, Pewaukee, Wisconsin and are submitted in confidence with the understanding that such material shall not be utilized in any way by any party without prior written consent from Harken, Incorporated.

HYCV065320330BCC2720 / HY